



Function comparison (Laser distance meter)

Model	NF-2030	NF-2050	NF-2240	NF-2260L	NF-271	NF-272L	NF-273L	NF-274L	NF-275L
Laser Beam	Red	Red	Red	Red	Red	Red	Red	Green	Green
Test Range	30m	50m	40m	60m	50/70m	60/80/100m	60/80/120m	60/80/100m	60/80/100m
Accuracy	±1.5mm								
Screen	1.2 inch High-definition screen				2.0 inch High-definition screen				
Battery Type	2*AAA		390mAh Li-battery		3*AAA	850mAh Li-battery			
Single & Continuous Measurement					✓				
Min & Max Measurement					✓				
Area & Volume Measurement					✓				
Laser-off&power-off Automatically					✓				
Unit Switch	○	○	✓	✓	✓	✓	✓	✓	✓
Benchmark Switch	○	○	✓	✓	✓	✓	✓	✓	✓
Hint Tone	○	○	✓	✓	✓	✓	✓	✓	✓
Voice Broadcast	○	○	○	✓	○	✓	✓	✓	✓
Addition And Subtraction	○	○	○	○	✓	✓	✓	✓	✓
Automatic Level	○	○	○	○	✓	✓	✓	✓	✓
Vertical Horizontal	○	○	○	○	○	✓	✓	✓	✓
Angle ±90°	○	○	○	○	○	✓	✓	✓	✓
Electronic Bubble	○	○	○	○	○	○	✓	✓	○
Bluetooth 4.x	○	○	○	○	○	○	✓	✓	○
Triangle Area	○	○	○	○	○	○	✓	✓	○
Trapezoidal Area	○	○	○	○	○	○	✓	✓	○
Point-point Measurement	○	○	○	○	○	○	✓	✓	○
Countdown Measurement	○	○	○	○	○	○	✓	✓	○
Data Storage	○	○	○	○	50 sets	99 sets	100 sets	100 sets	99 sets

Function comparison (Laser level)

Model	NF-112G	NF-15T
Laser Beam	Green	Green
Specifications	4V4H4D(3D12 lines)	4V1H1D(5 lines)
Laser Diode Wave Length	635nm	635nm
Working Range	25m	30~50m
Automatic Leveling Range	±3°	±3°
Power Supply	Lithium battery	Lithium battery
Accurcy	±2mm/5m	±1mm/3m
Operating Temp	-10 °C~45°C	-10 °C~50°C
Laser Level Weight	1.85kg	1.4kg



Function comparison

Description	NF-168V	NF-168S
Trace RJ11 Cable	X	✓
Trace RJ45 Cable	✓	✓
Trace BNC Cable	✓	✓
Scan on PoE switch	✓	✓
Check RJ45 wiremapping	✓	✓
Tone trace breakage points	✓	✓
polarity and shorted testing	✓	✓
Anti-jamming when tracing cable on switch	✓	✓
Visual fault locator	✓	X
Tones	2	2

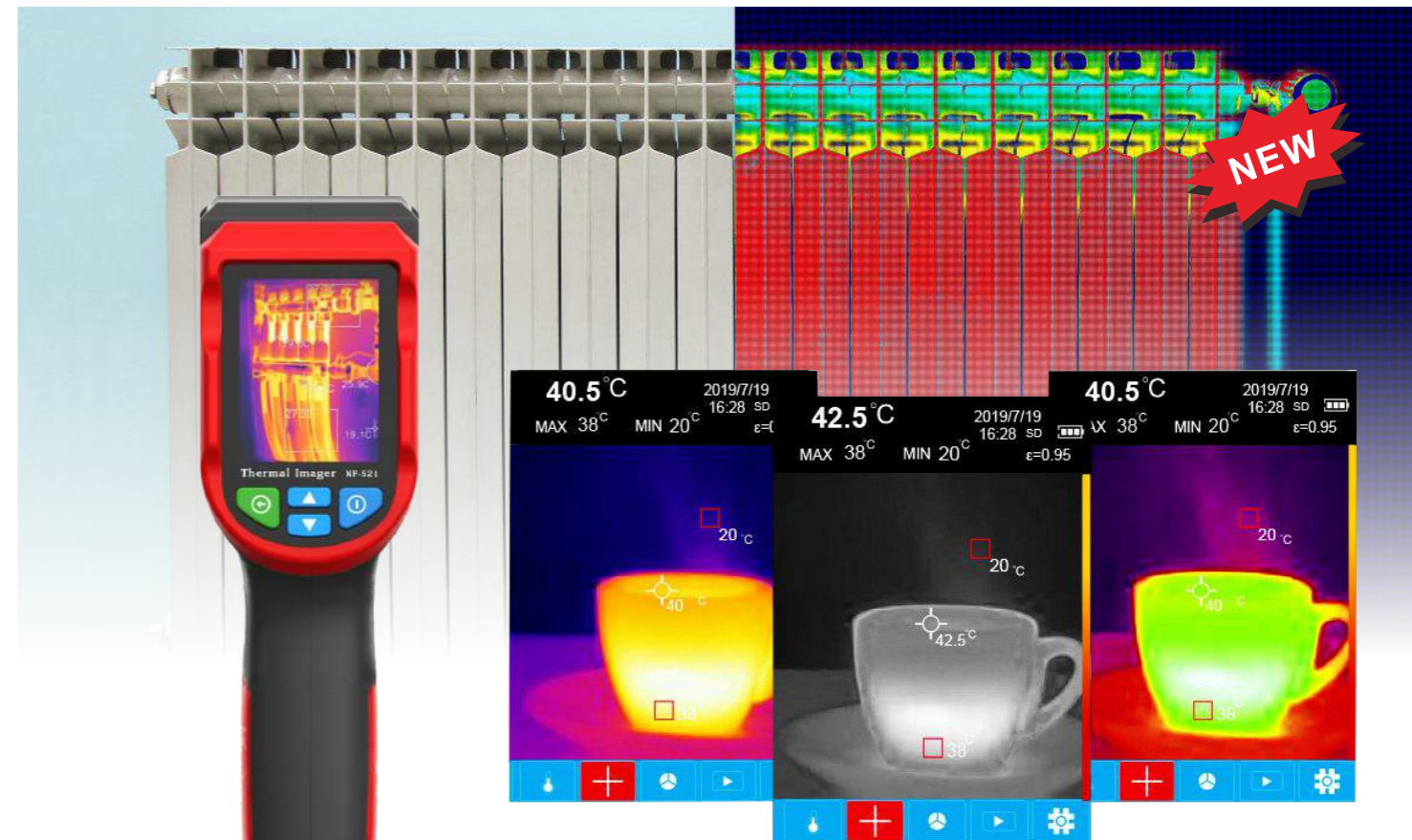
Function comparison

Description	NF-816L	NF-826
Display screen	X	✓
Trace underground cable(open)	✓	✓
Trace underground cable(short)	✓	✓
Voltage detecting	X	0~400V
Depth range	0.5m	2.5m
Max cable length	500m	1000m
Different codes & work modes	X	6 Codes & Auto/manual
Sensitivity adjustable	X	✓
Cable lead	good	Strong
Power supply for transmitter	Lithium battery	Li-battery
Power supply for Receiver	Lithium battery	Li-battery



Function comparison (CCTV Monitor Testes)

Description	NF-711	NF-711E	NF-711F
Lcd screen	7 inch	7 inch	7 inch
Touch screen	✓	✓	✓
Analog camera testing	✓	✓	✓
Ip camera testing	✓	✓	✓
AHD /CVI/ TVI camera testing	X	✓	✓
Cable scan/length/continuity	X	X	✓
Wifi & share	✓	✓	✓
Audido test	✓	✓	✓
Ptz control	✓	✓	✓
Color bar generator	✓	✓	✓
12v dc power output	✓	✓	✓
Poe power output	✓	✓	✓
Rs485 serial port too	✓	✓	✓
Hdmi video image output	✓	✓	✓
Internal sd storage space	✓	✓	✓
Poe voltage testing	✓	✓	✓



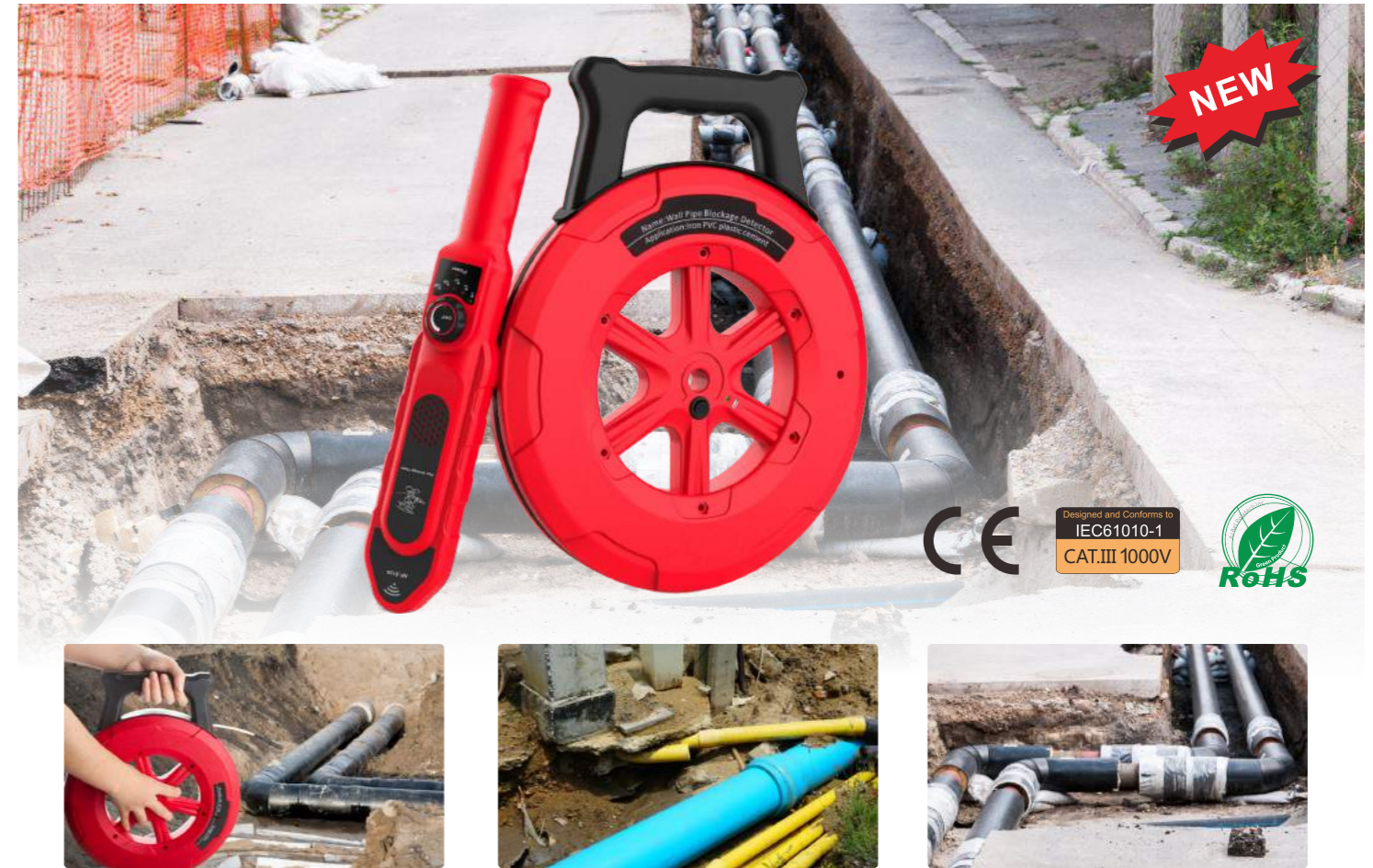
Thermal imaging technique

Description	NF-521
Thermal imaging resolution	32*32(1024 pixels)
Visiblelight camera	2 megapixels
Display resolution Color palttes	Thermalimaging. thermal mixing.digital camera
Color palttes	Ironred /rainbow/ black& white
Infrared spectralbandwidth	8-14um
FOV	33° horizontal
FOV	18mrad
Thermal imaging sensitvity	150mk
Frame rate	≤9Hz
Image format	BMP



Wall stud Scanner NF -515	
Maximum detection depth	150 mm
Non-magnetic metal	80 mm
Wood	30mm
Livewire	100 mm
Autopower-off time	5 min
Operating temperature	-10 ~+50°C
Storage temperature	-20~+70°C
Power	3.7VL-ion1500mAh
Battery life	10 hours
Protection class	Ip54
Weight	237g

Technical indexes NF-511	
Test distance	Screw 2-3cm
Blade	3-5cm
Mobile phone	10cm or so
Fruit knife	about 15cm
Power supply	1400mA polymer lithium battery
Working frequency	28KHz
Stand-by current	<10mA
Working current	<80mA
Operating temperature	-10°C~65°C
Storage temperature	-10°C~70°C
Size	360*65*40mm



Function comparison (Pipe blockage detector)			
Signal Length	NF-5120 (20m)	NF- 5130 (30m)	NF-5140 (40m)
Scope of application	PVC pipe		
	plastic pipe		
	Cement pipe		
	Iron pipe		
Working frequency	300 Hz		
	10 H		
Working temperature	0-40°C		
	3.7V, 2600mAh		
Receiver Specification	0-60cm (Metal pipe)		
	0-15 cm (Non-metal pipe)		
Sensitivity adjust	YES		
	300Hz		
Working frequency	20H		
	3.7V, 1400 mAh		



Specification

Functions	Accuracy		
	NF-531	NF-532	NF-533
DC Voltage	200mV~600V ±0.5%+3	60mV~600mV ±0.5%+3	60mV~1000mV ±0.5%+3
AC Voltage	200mV~600V ±1%+3	60mV~600V ±1%+3	60V~750V ±0.8%+3
DC Current	200mA~10A ±1.2%+3	600uA~10A ±1.2%+3	600uA~10A ±1.2%+3
AC Current		600uA~10A ±1.5%+3	60mA~10A ±1.5%+3
Resistance	200Ω~200kΩ(±1.0%+3) 2MΩ~20MΩ(±1.5%+3)	600Ω~600kΩ(±1.0%+3) 6MΩ~60MΩ(±1.5%+3)	200Ω~200kΩ(±1.0%+3) 2MΩ~20MΩ(±1.5%+3)
Capacitance		10nF~1000uF(±4.0%+5) 10mF/100mF(±5.0%+5)	10nF~1000uF(±4.0%+5) 10mF/100mF(±5.0%+5)
Frequency		10Hz~1000kHz(±1.0%+3) 10MHz(±3.0%+3)	10Hz~1000kHz(±1.0%+3) 10MHz(±3.0%+3)
Duty Cycle		1%~99%	1%~99%±(1.0%+2)
Temperature			-20°C~1000°C -4°F~1832°F
Display counts	2000 counts	6000 counts	6000 counts
Auto/Manual range			Manual
LCD Dipah-	√	√	√
Live Test		√	√
NCV		√	√
Diode test	√	√	√
Continuity	√	√	√
MAXMINhold		MAX	√
Data Hold		√	√
True RMS		√	√
Bandwidth	1kHz	1kHz	1kHz
Battery test(15V/9V)	√	√	√
Low battery indication		√	√
AUTO power off	√	√	√
Double color backlight			√
Terminal port LED indication			√
Flashlight			√
Power	2x1.5V AA	2x1.5V AA	2x1.5V AA
Safety	EN61010-1,-2-030 EN61010-2-033,CAT III 600V CAT III 1000V,CAT IV 600V		



Specification

Specifications	Accuracy		
	NF-534	NF-535	NF-536
DC Voltage	±(0.5%+3)	600mV/6V/60V/600V/ 600V±(0.5%+3)	600mV/6V/60V/600V/600V ±(0.5%+3)
AC Voltage	±(0.8%+3)	6V/60V/600V ±(0.8%+3)	6V/60V/600V ±(0.8%+3)
DC Current	/	/	6A/60A/600A ±(2.5%+5)
AC Current	2A/20A/200A ±(2.5%+5)	6A/60A/600A±(2.5%+5)	6A/60A/600A ±(2.5%+5)
Resistance	2kΩ/20kΩ ±(0.8%+3)	600Ω/6kΩ/60kΩ/600kΩ/ 6MΩ/60MΩ±(1.0%+3)	600Ω/6kΩ/60kΩ/600kΩ/6MΩ/ 60MΩ ±(1.0%+3)
Capacitance	/	10nF/100nF/1uF/10uF/100uF/ 1mF/10mF/100mF ±(4.0%+3)	10nF/100nF/1uF/10uF/100uF/1mF/ 10mF/100mF ±(4.0%+3)
Frequency	/	10Hz/100Hz/1kHz/10kHz/100kHz/ 1MHz/10MHz±(0.5%+5)	10Hz/100Hz/1kHz/10kHz/100kHz/ 1MHz/10MHz ±(0.5%+5)
Duty	/	1%~99% ±(1.0%+2)	1%~99% ±(1.0%+2)
Temperature (°C/°F)	/	-40°C~1000°C ±(1.0%+2)	-40°C~1000°C ±(1.0%+2)
Counts	/	-40°F~1832°F ±(1.0%+2)	-40°F~1832°F ±(1.0%+2)
Auto/Manual range	2000 counts	6000 Counts	6000 Counts
Continuity	√	Auto	Auto
Diode test		√ (sound and light alarm)	√ (sound and light alarm)
Data Hold	/	√	√
NCV	√	√	√
Back light	√	√	√
Flashlight	/	√	√
DCA ZERO	/	/	√
Low battery indication	√	√	√
AUTO power off	√	√	√
True RMS	/	√	√
LPF	/	√	√
MAX/MIN	√	√	√
LowZ	/	√	√
Power		2xAAA(1.5V)Batteries	
Weight	Approx. 150g	Approx. 260g	Approx. 260g
Size	164mmx61mmx30mm	193mmX73mmX34mm	193mmX73mmX34mm
Jaw Size	Ø18mmX36mm	Ø26mmX44mm	Ø26mmX44mm
Safety Rating	EN61010-1,-2-030 EN61010-2-033, EN61326-1 CAT III 600V	EN61010-1,-2-030 EN61010-2-033, EN61326-1 CAT III 600V	EN61010-1,-2-030 EN61010-2-033, EN61326-1 CAT III 600V